

## Interface problem between Agilent VEE and WinEASY.

It has been found impossible to access to WinEASY using the ActiveX controls from VEE. The software shown in Figure 1 doesn't work. WinEASY is opened but after it is impossible to control any aspect of the program. The first formula object is executed properly and WinEASY is opened. Then, the execution of the second formula generates an error; it says that *OpenWsp* is not a member of the *WinEASY\_RemoteCtrl.Application* class. Obviously this is not true.

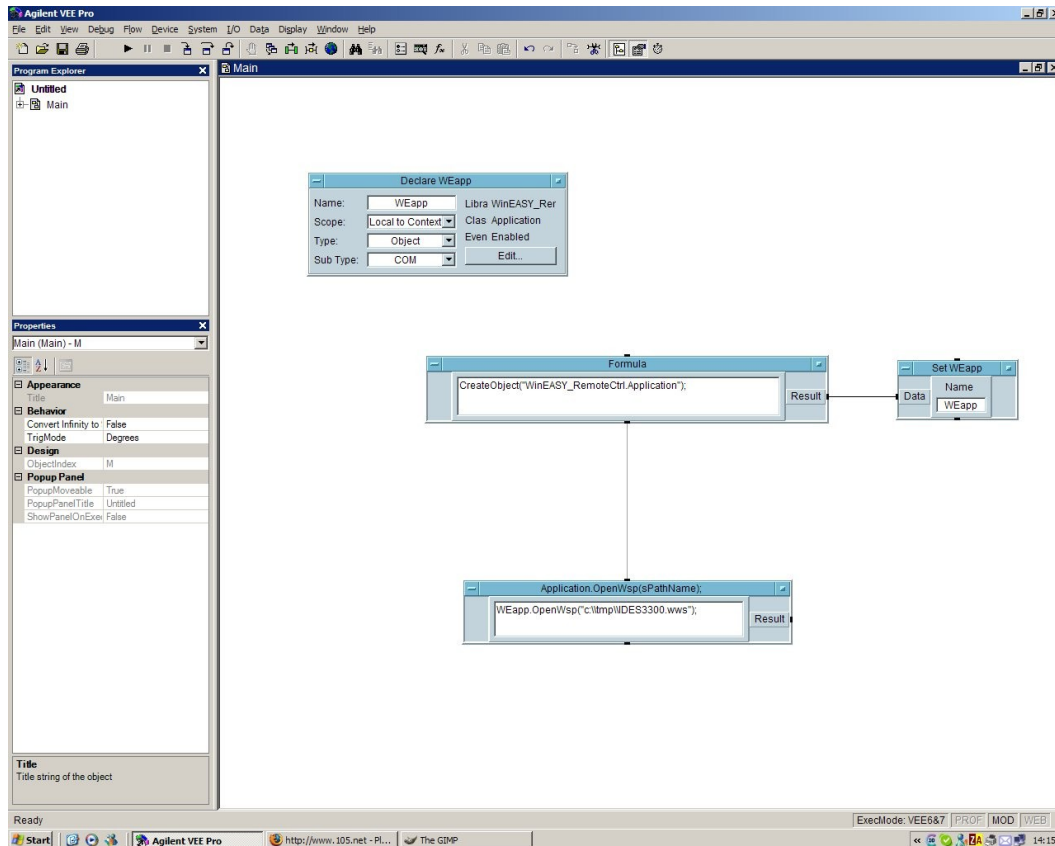


Figure 1.

Otherwise the software in Figure 2 seems to work. The only change is that the *WEapp* object as been declared of any subtype, and not *WinEASY\_RemoteCtrl.Application*. This solution, indeed it works, is not applicable because it is necessary to handle events generates by the *WEapp* object. This is possible only if it is a *WinEASY\_RemoteCtrl.Application* object.

Thus there are some problems for VEE to handle WinEASY application objects. Without solve this problem it is not possible to completely control WinEASY from VEE.

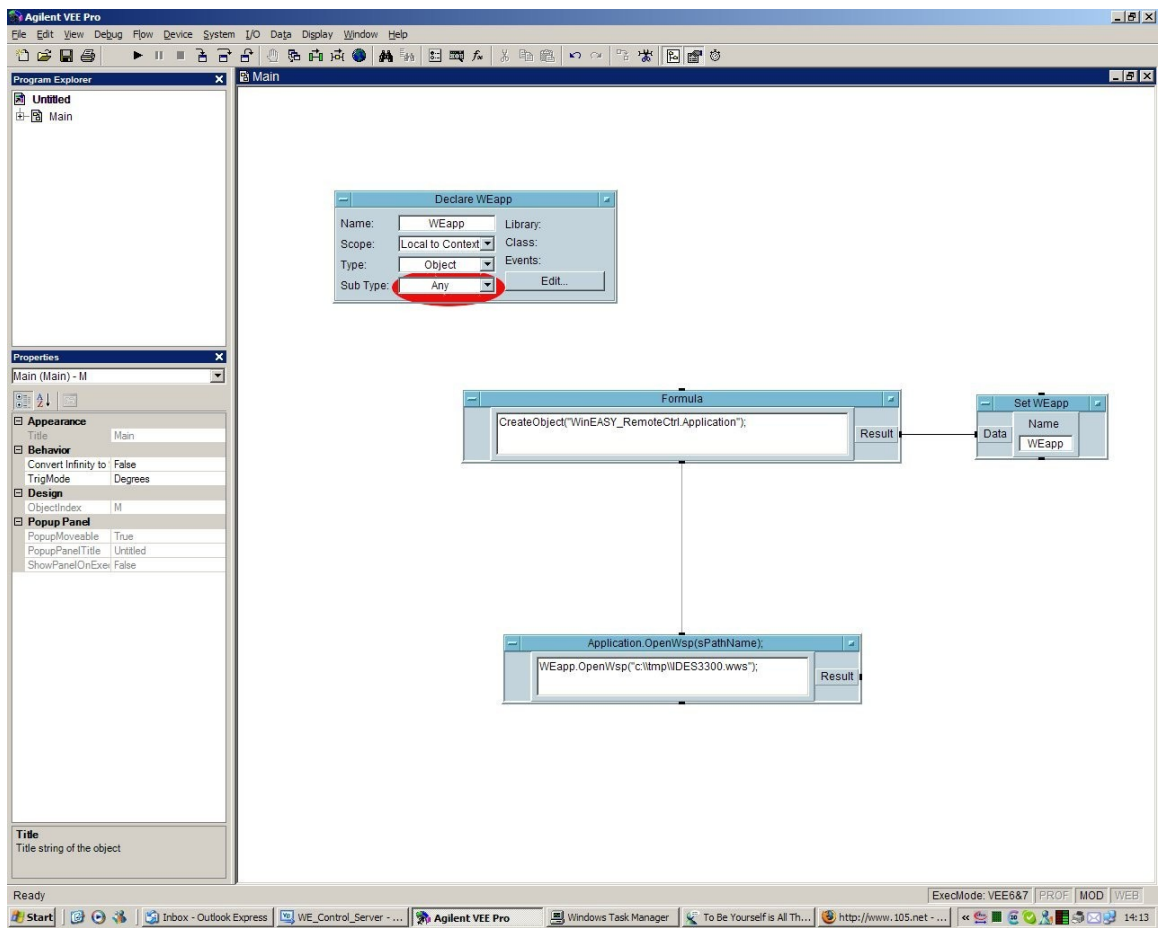


Figure 2