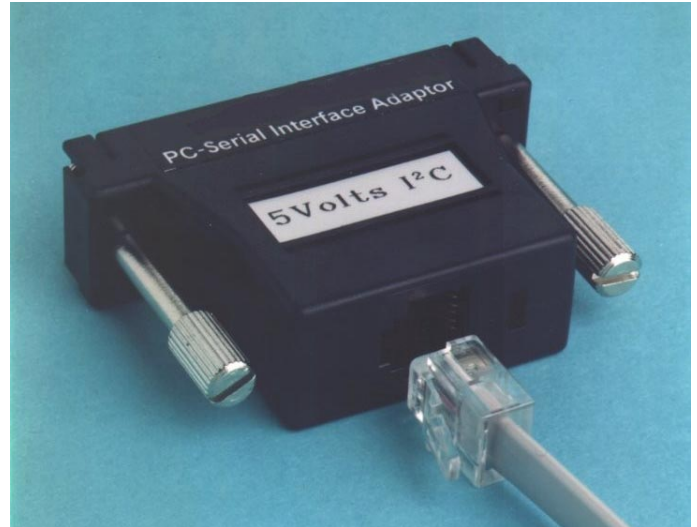


1. Overview

The Zarlink Serial Adaptor has been designed to allow easy connection of Zarlink Semiconductor evaluation boards to a PC running appropriate software.

The adaptor buffers signals between the PC's parallel (or printer) port, and the serial bus (usually I²C or compatible) on an evaluation board. It is powered entirely from the host board and draws no power from the PC making it equally suitable for use with laptop PCs or desktop units.



2. Using the Adaptor

Preferred connection sequence:

- a - Connect to unpowered application board
- b - Connect to unpowered PC
- c - Apply power to application board
- d - Start up PC
- e - Start appropriate software on PC

Disconnection of the adaptor should follow the same sequence in reverse.

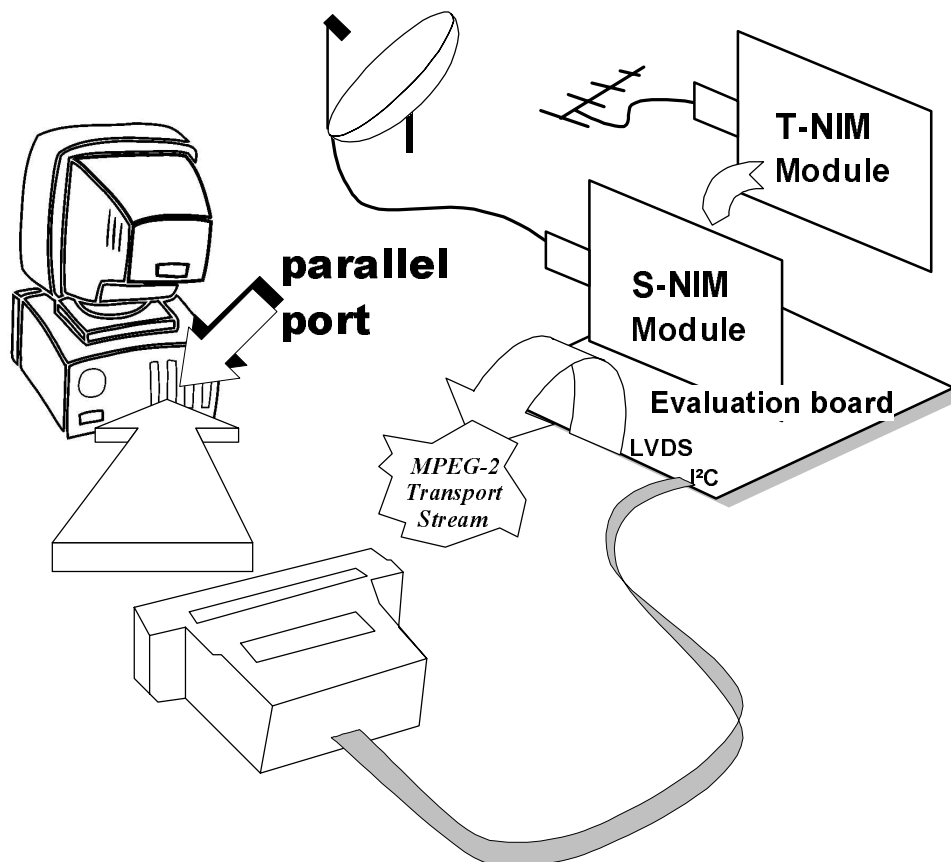


Fig. 1 – connection to a typical evaluation system

3. Schematic

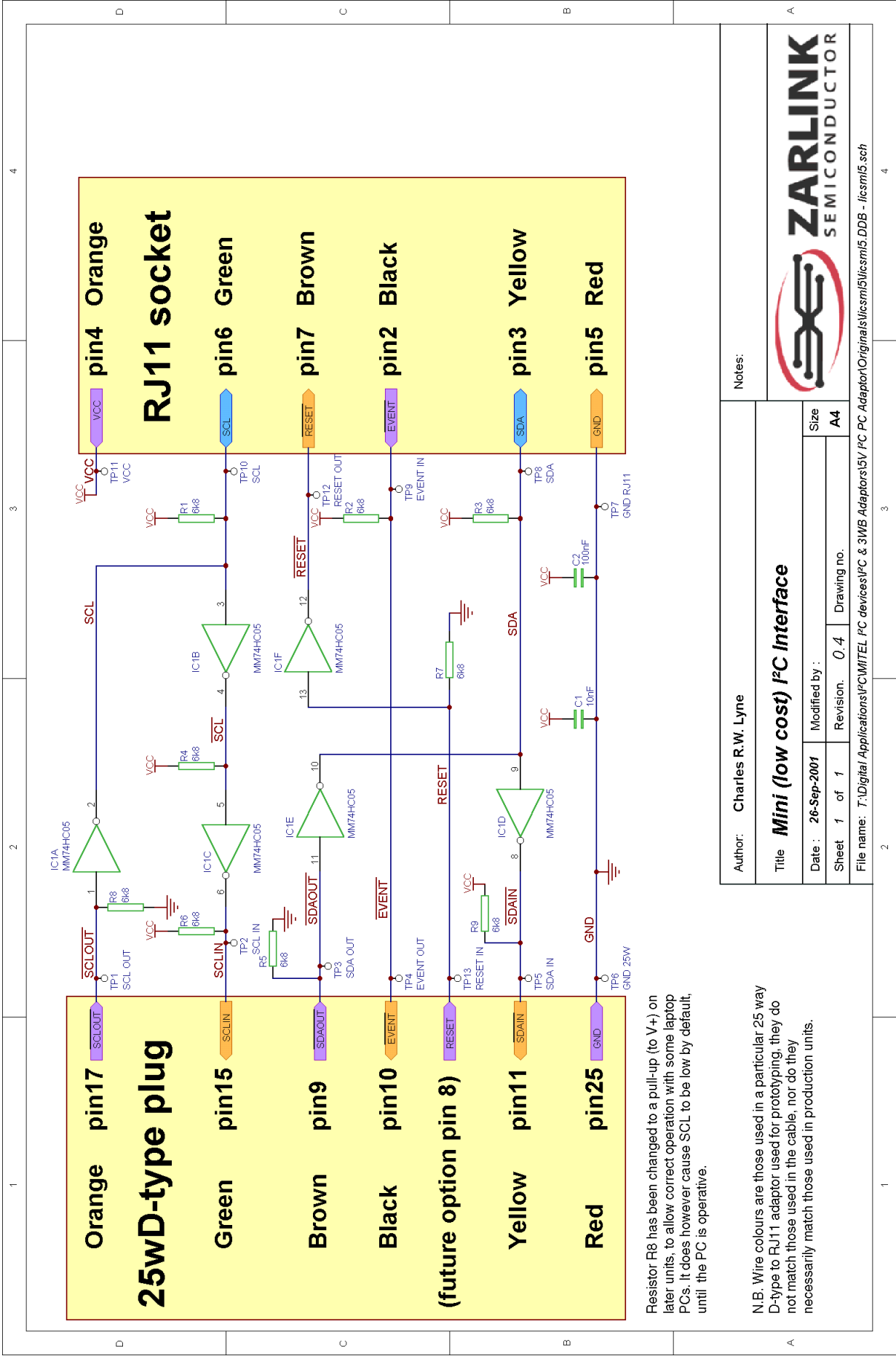


Fig. 2 – adaptor schematic